



Tecumseh



The Mighty Mini

**The all-new Tecumseh TA.
Setting the standard for today's R&F marketplace.**

IMPROVED EFFICIENCY

- Best in class for combined size, weight and efficiency
- Up to 35% less oil consumption than its predecessor

PROVEN RELIABILITY

- Backed by 77 years of Tecumseh compressor technology

SMALLER ENVELOPE

- Up to 17% less volume than older models of the same capacity
- Designed specifically for domestic appliances and small commercial applications

QUIETER OPERATION

- Redesigned internals provide for smooth motor operation
- Increased suction muffler volume for improved noise attenuation

INCREASED CAPACITY

- Models to cover 300 to 800 Btu/h

ENVIRONMENTALLY FRIENDLY

- Designed for optimal performance with "Green" hydrocarbon refrigerants R600a and R290
- Supports today's use of R-134a

SPECIFICATIONS

Product: TA

Evaporating Ranges:	Low Back: -34.4°C to -12.2°C (-30°F to +10°F)
Refrigerant:	R134a, R600a
Capacity:	1/5 HP through 1/2 HP
Connections:	Copper braze suction and discharge connections

Features

Oil:	Polyolester (POE)
Motor Type:	PTCSIR, PTSCSR, RSIR, CSIR
Voltages:	115/60/1 230/50/1 115-127/60/1 220/50/1 220/50-60/1 220-240/50/1

Agency Approval Listing: SGS, UL®*, other approvals available on request

*in progress

COMPRESSOR MODEL NUMBER

TA 1 360 Y - DS 1 A

Family

Application

High and Low Torque

Capacity

First number is total digits

Remainder is Capacity in Btu/h at 60 Hz

This example: 600 Btu/h Capacity

Refrigerant

Y = R134a M = R600a

Release Variant

Run Capacitor

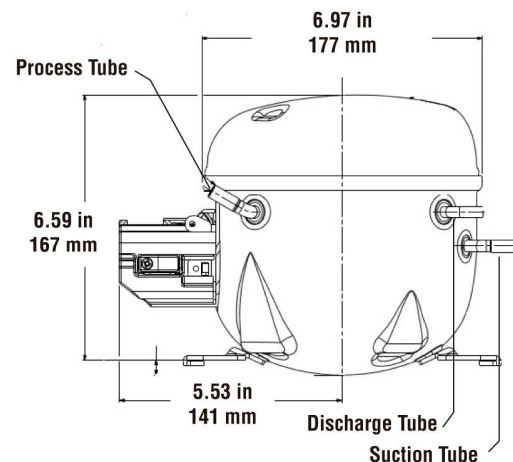
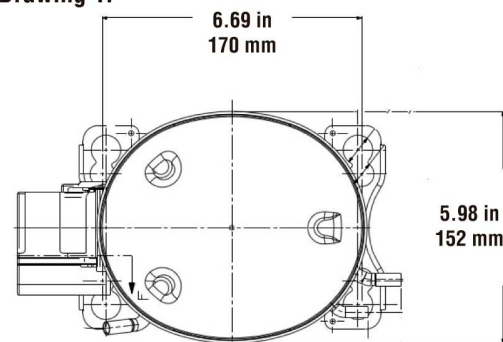
1. Without RC
2. Optional RC
3. With RC

Voltage

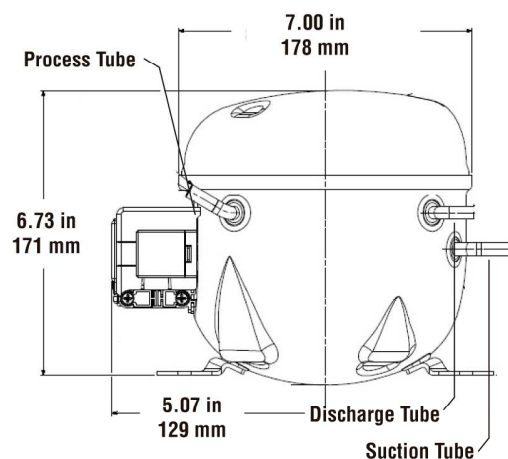
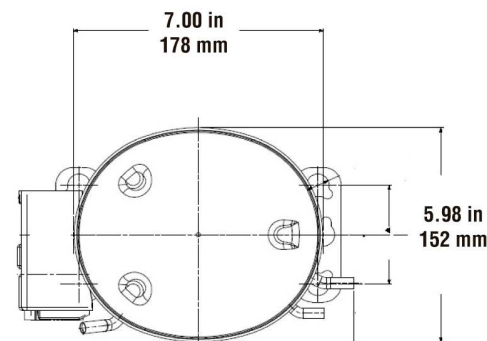
AA	115V/60/1
AE	230V/50/1
DS	115-127V/60/1
ES	220V/60/1
FS	220V/50/1
FZ	220-240V/50/1
GS	220V/50-60/1

DIMENSIONS

Drawing 1:



Drawing 2:



OPERATING ENVELOPE

Refrigerant	Capacity in Btu/h (60 Hz, Single Phase)						
	200	400	800	1,000	1,500	2,000	2,500

Low Back Pressure							
R134a							
R600a							

Note: R290 models in development



**GREEN
TECHNOLOGY**